



DOLCE CAMPOREAL LISBOA

DOLCE
HOTELS AND RESORTS®
BY WYNDHAM
CAMPOREAL LISBOA

Guest Rooms & Suites

Our elegant and modern accommodation includes 151 hotel rooms and suites, and also apartments, townhouses and villas which can have from 1 to 4 bedrooms. Be amazed by the protected landscape of Socorro and Archeira mountains and enjoy the wonderful views over our 18-hole golf course.

BEDROOMS

- 151 Rooms
- 22 Family/ Grand Family
- 2 Suites
- 8 Suites Duplex
- 1 Royal Suite
- Connecting rooms for families

ROOM FACILITIES

- Flat screen television
- Work desk
- Wireless internet
- Mini-Bar
- Iron and board
- Large bathrooms with separate rain shower and bath
- Room service

Restaurants and Bars

Dine on Portuguese and international cuisines in casual and sophisticated settings.

- “Manjapão” buffet restaurant
- “Grande Escolha” restaurant
- “Garden Terrace” restaurant and bar
- “Wellington Bar”
- “Eagle Pool Bar” (seasonal)

Meeting & Events

The meeting rooms meet the standards established by the International Association of Conference Centers and offer conveniences including ergonomic chairs, tables with plug in system, top notch audiovisual equipments and wi-fi internet.

On-site Activities

Whether you want to relax or stay active, there’s always plenty to do at Dolce CampoReal Lisboa.

- Fitness centre available 24h
- Indoor and 2 outdoor swimming pools
- Tennis courts
- Donald Steel designed Golf Course – 18 holes Par 72
- Amai Spa – 700 m2 , 7 treatment rooms and water circuit
- Kids Club – Activities for children
- Center “Clube Aventura” – Teambuilding and outdoor activities
- Footgolf – Certified by the National FootGolf Association

Local Activities and team building

- Regional wine tour
- Visit the beaches of Santa Cruz, one of the best European spots for surfing
- Explore the medieval town of Óbidos & its treasures
- Get to know the Historical Route of the Lines of Torres Vedras



Capacity chart

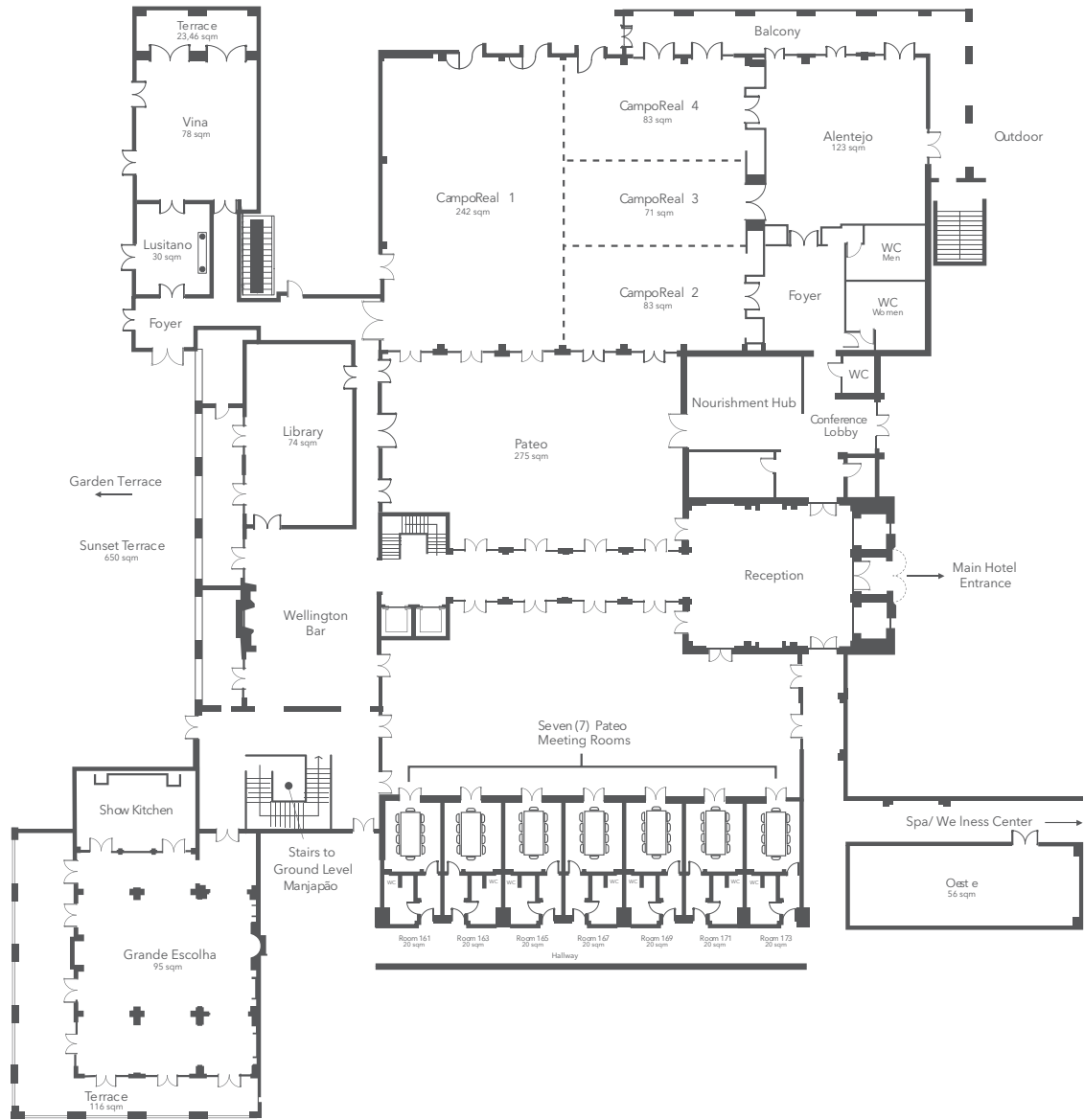
- 2150 m² (23 142 sq ft) of indoor meeting and banqueting area
- 23 flexible meeting rooms
- Plenary room of 489 m² (5263 sq ft) for up to 500 people

Meeting Rooms	Area	Height	Dimensions		Theatre	Classroom	U Shape	Conference or Boardroom	Cabaret 8/per table	Cocktail	Banqueting			
			m ²	m							length	width	12 pax*	10 pax
Salas de Reunião											12 pax*	10 pax	10 pax	12 pax*
CampoReal	489	3,65	25,06	19,51	480	160	100	72	176		300	250	300	360
CampoReal 1	242	3,65	12,41	19,51	200	120	52	50	88		144	120	150	180
CampoReal 2	83	3,65	12,26	6,77	60	16	28	28	32		48	40	60	72
CampoReal 3	71	3,65	12,26	5,79	50	16	28	28	24		36	30	50	60
CampoReal 4	83	3,65	12,26	6,75	60	16	28	28	32		48	40	60	72
CampoReal 2+3	154	3,65	12,26	12,56	120	64	40	44	56		84	70	110	132
CampoReal 3+4	154	3,65	12,26	12,54	120	64	40	44	56		84	70	110	132
CampoReal 2+3+4	239	3,65	12,26	19,51	200	120	52	32	88		144	120	150	180
Alentejo	123	3,65	11,32	10,83	80	64	32	24	40		72	60	90	108
Vina	78	3,65	9,59	8,11	50	48	28	16	32		48	40	60	50
Lusitano	30	3,65	6,32	4,82	20	8	12	8	8		12	10	10	12
Library					50	40	32	24	32		36	30	40	48
Oeste					40	32	24	16	16		24	20	30	36
7 Pateo Meeting Rooms	20	2,40	13	5	15	N.A.	N.A.	10	N.A.	N.A.	N.A.	N.A.	N.A.	N.A.
Banqueting - Cocktail														
Páteo	275		20,63	13,34						140	N.A.	N.A.	N.A.	N.A.
Sunset terrace	650		43,93	14,81						300	N.A.	N.A.	N.A.	N.A.
Total banqueting and meeting space											1925			
Restaurants														
Manjapão	372	3,15	30,53	12,18							180	180	180	180
Grande Escolha Interior	95	3,15	12,34	7,71						100	66	66	66	66
Grande Escolha Exterior	95	3,15	12,34	7,71						100	72	60	72	60
Garden Terrace Interior	107	2,56	14,35	7,46						60	40	48	40	48
Garden Terrace Exterior	107	2,56	14,35	7,46						120	120	100	120	100



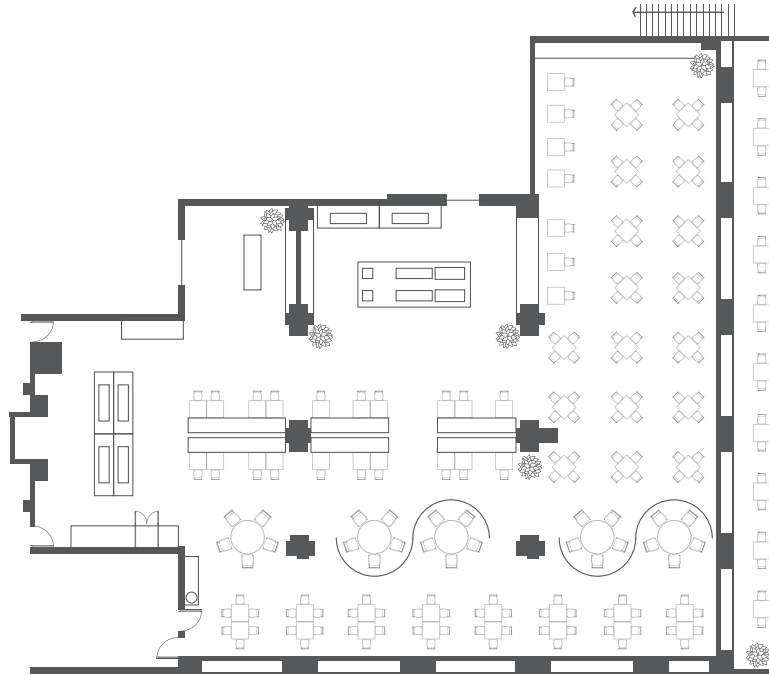
Floor Plans

FIRST FLOOR



Floor Plans

GROUND FLOOR - Manjapão Restaurant



Map of the area

